

2900M with Sitini Online Sampler

ONLINE MONITORING AND CONTROL SYSTEM

The YSI 2900M Online Monitoring & Control System featuring the YSI Sitini Online Sampler is a key and reliable partner for the monitoring and optimization of your bioprocess.

The YSI Sitini Online Sampler automatically draws fluids from your bioreactor and delivers samples directly to the YSI 2900 Biochemistry Analyzer for testing. Sampling is done aseptically as lines are flushed and antiseptic is kept in them after each draw. The system supports connection with RS232, Ethernet, and OPC. The YSI 2900M Online Monitoring & Control System provides a simple and reliable solution for running your bioprocess automatically with little risk of contamination.

Features and Benefits:

- Accurate results in less than 1 minute.
- Automatic online aseptic sampling for unattended operation while sterility of process is maintained.
- Autoclavable components for sterilization with your bioreactor.
- The YSI 2900M System connects to process management instruments via RS232, Ethernet, or OPC.
- Searchable database allows you to access your stored results quickly.
- Slim modular design occupies small lab footprint.



a xylem brand

2900M WITH SITINI ONLINE SAMPLER



YSI 2900D Biochemistry Analyzer

Components for 2900M

2900D	Biochemistry Analyzer with a biosensor module
2960	Sitini Online Sampler
2938	Bottle Rack with Reagent Level Sensing (1 chamber)

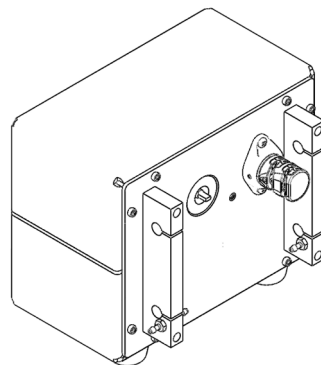
Sitini Online Sampler Specifications

Dimensions	6.25L x 4.75W x 5.50H
Weight	3.0 lbs
Power requirements	90-264 VAC, 47-63 Hz, 30 Watts nominal
Regulatory compliance	CE, RoHS

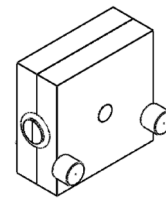


YSI 2960 Sitini Online Sampler

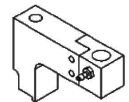
YSI Sitini Online Sampler Includes



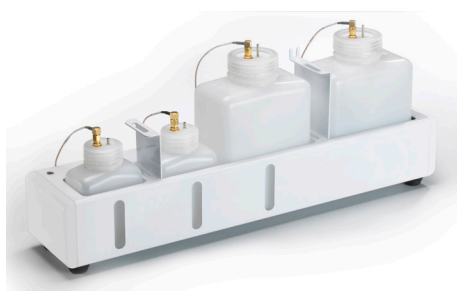
Sitini sub-assembly



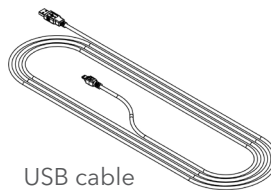
Autoclavable pump



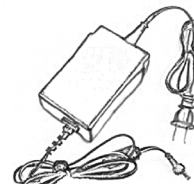
Sitini sample cup



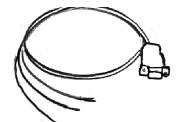
YSI 2938 Bottle Rack with Reagent Level Sensing



USB cable



Power cord



Interface cable

YSI 2900 operation and technology may be covered by one or more of the following U.S. patents: 6,020,052 and 5,766,839.



a xylem brand

YSI Incorporated Life Sciences
1725 Brannum Lane
Yellow Springs, Ohio 45387
+1-800-659-8895
+1-937-767-7241
Fax: +1-937-767-8058
www.ysilifesciences.com

YSI (UK) Ltd.
119 Fleet Road
Fleet, Hampshire, GU51 3PD
England
+44-1252 819844
Fax: +44-1252 819544
www.ysiuk.com

YSI (Hong Kong) Limited
Room A, 11th Floor
Hoover Industrial Bldg.
26-38 Kwai Cheong Road
Kwai Hing New Territories
Hong Kong
+852 2891-8154
Fax: +852 2834-0034